



# The Dose

The Merrick Group, Inc.

MARCH  
2022



## DATA MANAGEMENT TRAINING & EDDY CURRENT CERTIFICATION

Above: Rhonda Lambert, ECT Level III and data manager, conducted the data management training at our Denver, NC office. Rob Zecker, Jayden Muellner, Josh Bennett, Austin Wirz, Chris Diltz, Ashley Williams & Reese Eyerly attended.



## ANALYSIS



Above: Jake Endres, Principal Level III, certified Reese Eyerly & Jonathan Marshall as Level IIA Analysts



## LEVEL I & II

Above: Steve Joiner and Jake Endres certified new Level I and Level II technicians: Brayton Oakes, Stacy Young, Scott Allis, Cody West, Matt Mesce & Rachel Rauch



MARCH

SSS  
BRUNSWICK  
WATTS BAR  
DC COOK  
MCGUIRE



Sunday  
March 13<sup>th</sup>

# DISTRACTED DRIVING

Using cellphones or other devices while driving has proven to be deadly. Smartphones have made it easy for us to stay connected at all times but that can pose safety risks. Mitigate the risk of injury to yourself and others by putting the cell phone down or placing it in airplane mode to eliminate the need to check that email or text and pull over if you must use your phone. As a passenger, encourage the driver to stay safe on the road.

Other distractions on the road can include eating, radio, passengers, makeup, & absent mindedness.

**Ask the question... Is it worth the risk??**



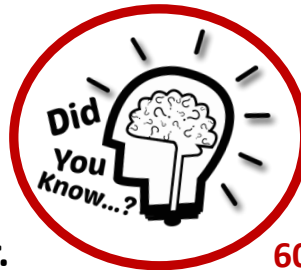
**3,179**

The number of people killed each year in vehicle crashes involving distracted drivers.



**6X**

Texting while driving is 6x more likely to cause an accident than drunk driving.



**1 in 4**

The probability that a vehicle crash involved a cell phone.



Number of car crashes every year.



**1.6 million**

60% of people admit to using cell phones while driving at least occasionally.



## TRUCK & TRAILER SAFETY

Situational awareness is a key human performance tool to utilize when operating a vehicle. Prior to getting in the vehicle, think about your task – where are you going, what are you moving/hauling, who are you going to see, what path are you going to take, check lights, fuel, tire pressure, adjust mirrors, etc. IE - Do a two-minute drill/take a minute! If you are traveling with a trailer and it is feasible, walk down your travel path to validate any assumptions and identify any hazards or obstacles. Utilize a spotter as necessary to give direction when reversing and to aid in identifying hazards.

## **To the Merrick Group,**

I was the task director for the 1D Inlet Waterbox repair performed by the Merrick group and the Plastacor application. My first contact was with Jim Fisher leading up to the week of execution. Ryan Rondosh was the dayshift lead and Keith Owensby was the nightshift lead. During the work, I was on nightshift with Keith. I wanted to provide feed back to the performance from my point of view.



### **James Fisher**

Jim was very engaging in all of my conversations with him. He was quick with his turnaround on any questions I emailed or texted him with. We were pretty much in constant contact for the weeks leading up to execution week. I appreciate him giving me the names and numbers of the leads on days and nights the week before execution. While I didn't talk with them directly, it gave me a chance to email them some arrival details. It was a very good hand off. I thought Jim did a great job at asking me questions to help him set up the job in the best possible way.

### **Ryan Rondosh and Keith Owensby**

Both of these guys were very engaging. I was impressed with their knowledge of the plant, systems and processes. Both were very engaging at moving the process forward. Both were engaging with Rad Protection, Fire Marshall, Supply Chain, Facilities, etc. Plainly put, neither of them waited. They were always looking to the next step on working with the site to get it done. I personally appreciated that the most. The shifty report was great tool to review the progress. Both of these guys were professional, engaging and transparent in everything they did here at Plant Hatch. Both of them made this repair job be successful at Plant Hatch. I would recommend them for any job in our Fleet.

In short, I appreciate Jim, Ryan and Keith for the hard work, engagement and knowledge to make this repair work on 1D Inlet Waterbox to be very successful.

Thank you!

**Phil D. Johnson**  
**Plant Hatch - Chemistry Superintendent**



# GET TO KNOW...

## SUSQUEHANNA STEAM ELECTRIC STATION

Location: Berwick, PA

Owner: Talen Energy

Reactor Type: BWR

Cooling Source: Susquehanna River

Constructed: 1973

Licensed through: 3/23/2044

**Merrick currently holds contracts for HX maintenance, circ water valve maintenance, eddy current testing & several non-outage ongoing projects at SSES.**



## Check this out!

**Calvert Cliffs Outage News**

Way to go Merrick Company!

Proper Storage

Neat and Tidy!

What You Do TODAY... Matters TOMORROW

Could It Happen Here? Industry OE

**RISE UP**

We got a shoutout in the Calvert Cliffs Newsletter!!

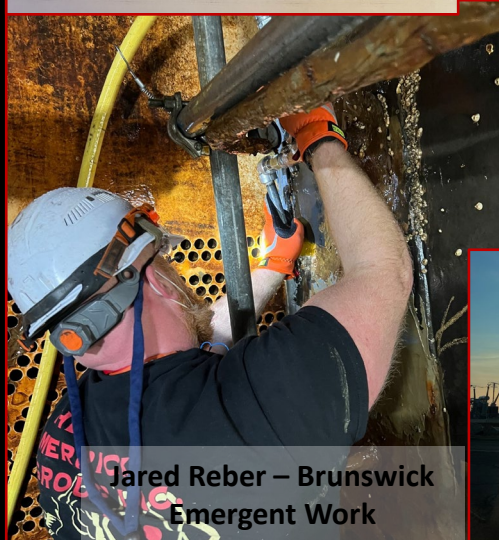
Dexton Lively & Jerrod Ricketts  
Joplin



Avery & Johnathan Green - Enviva



Scott Shamany – Calvert Cliffs



Jared Reber – Brunswick  
Emergent Work



Calvert Cliffs

