



# The Dose

The Merrick Group, Inc.

APRIL  
2024

## COAL *to* NUCLEAR

- **30%** of the nation's coal plants are expected to retire by **2035**
- More than **300** existing and retired coal plants are suitable to host advanced nuclear plants and technologies
- Up to **35%** can be saved on plant construction costs by reusing existing coal plant infrastructure
- **650+** high paying nuclear jobs would be created or converted throughout the region
- Up to **86%** drop in emissions in the surrounding region by replacing coal with nuclear plants
- **\$275** million added annual economic activity in nuclear sector communities
- Coal to nuclear ensures communities are not left behind on the transition to clean energy
- TerraPower plans to build its Natrium reactor near a retiring coal plant in Kemmerer, WY
- **10** states are interested in coal to nuclear transition: Arizona, Colorado, Kentucky, Maryland, Montana, North Carolina, Pennsylvania, Utah, West Virginia, Wisconsin

## WHERE ARE WE WORKING THIS MONTH?

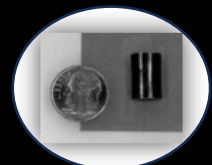


SSES  
 Sequoyah  
 Catawba  
 Wolf Creek  
 DC Cook  
 Harris  
 Oconee  
 Montour  
 Brunner Island

## DID YOU KNOW?



Nuclear fuel is extremely energy dense. 1 uranium pellet equals 17,000 cubic feet of natural gas, 149 gallons of oil, 1 ton of coal.



# CLEARANCE & TAGGING

The Clearance & Tagging Program provides safety and protection to people working on equipment that affects plant operations.

## Energy Isolation Device

A physical device that prevents the transmission or release of energy

People are protected by properly identifying and controlling ALL sources of hazardous energy supplying the equipment or system.

## Clearance

Document that specifies the EIDs that are used to provide protection

### What is Hazardous Energy?

Any energy, including mechanical, pneumatic, hydraulic, electrical, chemical, nuclear & thermal energies that could cause injury to an employee.

## CLEARANCE & TAGGING CREW BRIEF

The "Holder" conducts a brief to all Authorized Workers who will be covered under the clearance to ensure they understand how and why they are protected as well as the limitations of the protection provided by the clearance.

## CLEARANCE HOLDER

The administrative owner of the Clearance. Verifies adequacy, accuracy & effectiveness of the clearance.

## SIGNING ON TO THE CLEARANCE

Authorized Workers must attend the clearance brief prior to signing on the clearance. You must understand the adequacy of the clearance protection. It is the AW's responsibility to sign off the clearance at the completion of work or the end of shift, whichever comes first.

## AUTHORIZED WORKER

Any person that needs protection under a clearance.

ESOMS IS THE ELECTRONIC CLEARANCE

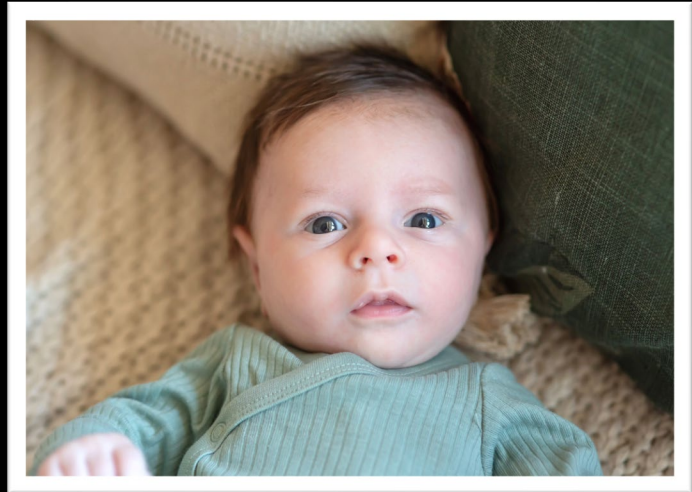
YOU CANNOT SIGN OTHERS ON/OFF CLEARANCES

No one is permitted to break the plane of any component until they have been briefed and signed on the clearance. That means if you are walking down a component, you cannot cross the barrier with your hand or body until/unless you are signed on the clearance.



## SWEET BABY BOYS

**Congratulations to Justin & Jordan Merrick! Mason David Merrick was born on February 15<sup>th</sup> at 9:48 am weighing 7 pounds 12 ounces.**



**Congratulations to Brian & Andrea Stackhouse on the birth of their baby boy! Lincoln Stackhouse made his debut March 18<sup>th</sup> at 8:07 pm weighing 8 pounds 2 ounces.**

## Shout Out!

**“One of the Merrick Proctors at the CBT trailer caught an in-processing individual using unauthorized material during an exam (good catch by the proctor and then the proctor followed the proper protocol). This morning, I briefed the proctors at the West Building on the instance and to be aware. Once we seated all the in-processing students, Julie Letteer & Randy Peters took it upon themselves to brief the students on exam expectations and a few other misc items. Kudos to these two individuals for jumping in and taking ownership.” – Bill Cook, SSES Supervisor**

**“I want to also thank and compliment The Merrick Group for their quick response, quality work and professionalism. This job had many challenges on site for quick coordination and turnaround and this was accomplished with minimal delays. The whole crew on site performed the job under the estimated timeframe and acted with professional courtesy and respect throughout the process. I want to personally pass along my thanks to the field crew of Dexton, Bobby, Matt, Chris Diltz and Karsten. Also, thanks to Chris Speas for the quick response to our cold call about our need here at Union. This type of intentional response and attention to detail is uncommon in today’s work environment so I wanted to take the time to call attention to it.” – Brad Shoemaker, Union Power Station Engineer**



From top to  
bottom:

Brunswick HX  
Brunner Island  
SSES Sealands  
Oconee HX



*“Successful people are  
not gifted;  
they just work hard,  
then succeed on  
purpose.”*

