



The Dose

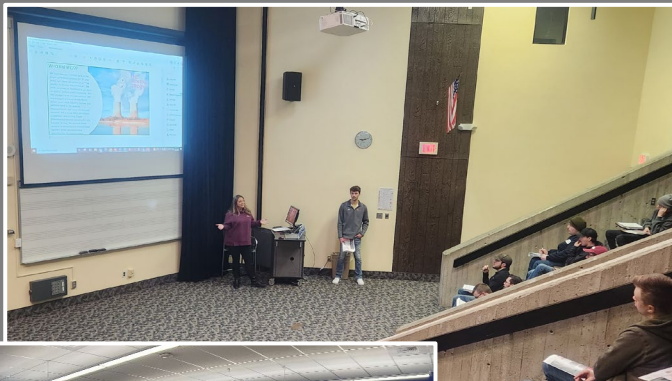
The Merrick Group, Inc.

MARCH
2023

Internship Opportunities for NDE Students

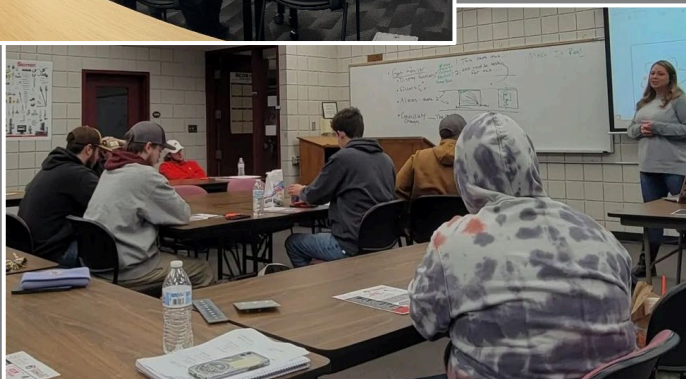
As our company continues to grow, so do our efforts to employ qualified individuals who are looking to develop their nuclear careers. In January & February, Josh Sano, Jayden Muellner, and Reese Eyerly visited several NDE schools who have students looking for internships as well as recent graduates looking to initiate their careers. We were also able to host Central Piedmont Community College's NDE students in our Denver office to present our robot training wall as well as showing them how we perform bobbin eddy current testing to heat exchangers. We're looking forward to seeing some of these students on upcoming outages!!

Ridgewater
College
Hutchinson,
Minnesota



Clover Park
Tech. College
Lakewood, WA

Cowley
College
Arkansas
City, KS



WHERE ARE WE WORKING THIS MONTH??



CALVERT CLIFFS
MONTOUR
SSES
MCGUIRE
BRUNNER ISLAND
SEQUOYAH
VOGTLE



Sunday, March 12th

**DID YOU
KNOW?**

**Nuclear power
plants provide
over 475,000 jobs
in the U.S.**

(U.S. Department of Energy)

ECT Level Training & Certifications

Congratulations to the following people who completed Eddy Current Level Training and have been certified as:

Level I: Skeet Matthews, Taylor Mims, Ethan Tyree, Clyde Bates, Kristina Connelly & Jackson Faulkner

Level II: Matt Mesce, Cody West, Charles Young & Denise Young

Level IIA: Marcus Washington & Brayton Oakes



Level III Instructor, Steve Joiner,
with new analysts Brayton Oakes
& Marcus Washington



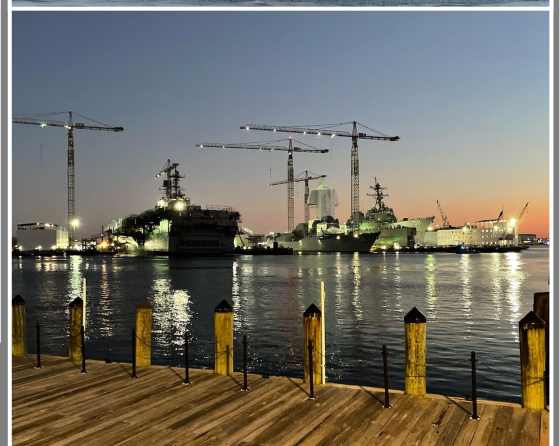
Congratulations



USS BAINBRIDGE

“Great job with the work on 1, 1A, 2, and #3 condensers on the Bainbridge. We received all SAT checkpoints for cleanliness. As always, your team knocked the work required out of the park.”

Thomas Kross, Project Team Lead II
Johnson Controls Navy Marine Division



HUMAN PERFORMANCE TOOLS & STANDARDS

Our most significant errors made while working are associated with human performance related issues. Review the tools we utilize to avoid these errors & ensure we understand the risk involved with our daily activities so we can implement proper mitigating actions to eliminate the risk and most importantly always **STOP** if you are unsure.

PRE-JOB BRIEF

- We use a pre-job brief before the start of assigned activities, once per shift, if the activity exceeds one shift, there shall be a brief each day before work commences
- Discuss specific tasks, roles and responsibilities of each team member
- Ensure workers are involved and understand the brief
- Cover relevant OE and potential human performance errors
- Use three-part communication to ensure each person understands their role

PROCEDURE

- Use of a procedure is required any time written instructions exist for a work activity
- Have a working copy in the field
- Review limits, precautions, conditions & instructions prior to work commencing
- Follow written instructions without deviation
- **STOP** if the step cannot be performed as written, injury or equipment damage will occur or if results are unexpected

QUESTIONING ATTITUDE

- You should use a questioning attitude when you encounter unexpected info, instructions or results.
- Ask questions if you are unsure about your role or the work being done
- Anticipate possible consequences of your actions
- Utilize peer check with your co-workers
- **STOP** - Do not proceed in the face of uncertainty

SELF-CHECK/STAR

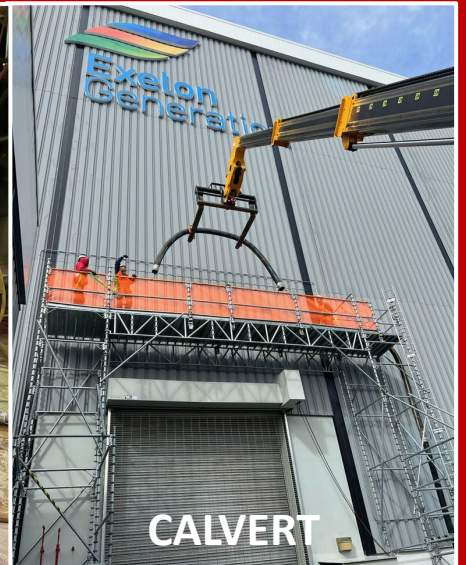
- S** STOP – Focus attention on the task at hand and eliminate distractions
- T** THINK – Understand what will happen when the correct action is taken and what consequences may come from the wrong action
- A** ACT– Perform the correct action on the correct component following procedure
- R** REVIEW – Verify the anticipated result was obtained



ANO



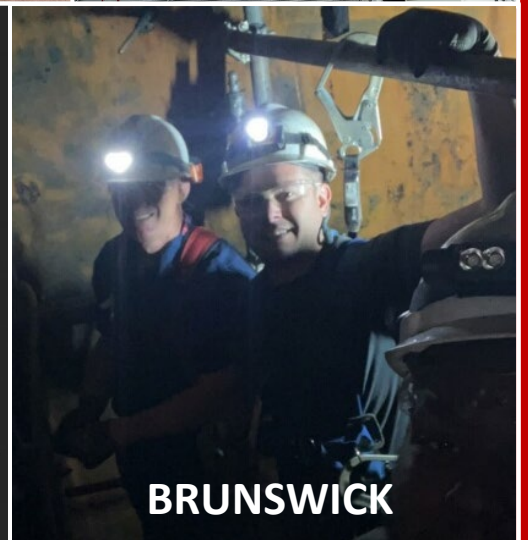
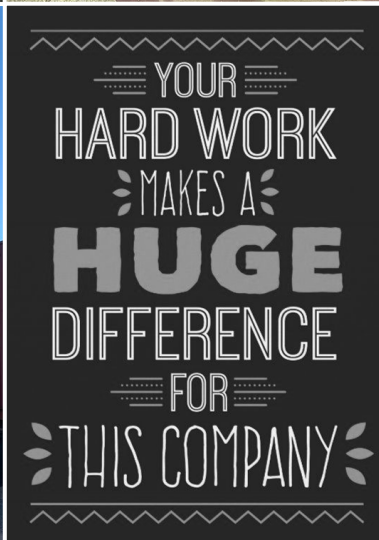
ANO



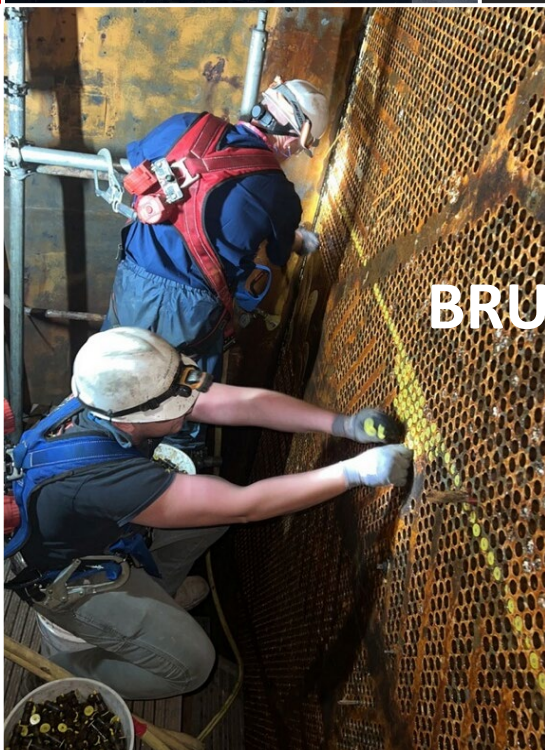
CALVERT



SSES



BRUNSWICK



BRUNSWICK

