



# The Dose

The Merrick Group, Inc.

OCTOBER  
2025

## Merrick Group supports the annual Talen Energy Trap Shoot benefiting the United Way

*Each year Merrick attends and sponsors this fun event to help raise funds for the Berwick area United Way.*



Annual Trap  
Shoot Corporate  
Sponsor

L to R:  
Matt Kalinchok,  
Jim "Peech"  
Betzko, Dan  
Merrick, Jason  
Bella, Jim Fisher



## WHERE ARE WE WORKING THIS MONTH?



DC COOK  
WOLF CREEK  
BRUNNER ISLAND  
HARRIS  
SEQUOYAH  
FARLEY  
OCONEE  
SSES  
BRAIDWOOD

## DOSE CONTENT

Thanks to everyone who has sent pictures in so far this season! Keep them coming, there may be a pop-up contest at the end of the season!



Did you?  
**Know?**

*Plant Hatch was Georgia's  
FIRST nuclear power plant,  
connected to the grid in  
September 1978*

# WORK PACKAGE & PROCEDURE USE & ADHERANCE

As nuclear professionals, we must perform the correct action on the correct component, following the applicable procedure every single time we go out in the field.



**PRE-JOB BRIEF**

Every activity we perform has a work order and procedure associated with it. Prior to the beginning of a task, you will participate in a Pre-Job Brief where you will discuss the specific tasks, roles and responsibilities of each team member and cover relevant OE and potential human performance errors. During the Pre-Job Brief, you will be notified of any anticipated QC Hold Points in your Procedure. You must sign onto the clearance prior to breaking the plain of the component.



**CCV & TWO MINUTE DRILL**

Be sure to walk down your assigned component prior to initiating work. You will need to perform a proper CCV and a Two Minute Drill prior to work, as well as checking and signing off on all applicable tags in the work area. While communicating with your crew, be sure to engage in the phonetic alphabet as well as using three part communication to ensure all members of the crew understand next steps in the procedure.



**PROCEDURE**

You must follow all steps in the procedure as they are written. Be sure to use the circle/slash method in order to be sure all paperwork is up to date at all times. Only the person who has completed the work should sign off on the step. You should never complete paperwork on someone else's behalf. If your work environment changes during the course of work, stop and perform another Two Minute Drill to ensure you can safely follow all written instructions without deviation.



**STOP WORK**

**STOP** when unsure about the next steps in your work package, when conditions change and you cannot safely complete the steps, when you come to a QC hold that requires you to contact QC prior to continuing work, or if ANYTHING seems unusual or unexpected. Take the time to call your Supervisor and ask for guidance before moving forward.



**END OF ACTIVITY OR SHIFT**

Once work is complete, or at the end of your shift, you will return to the office to complete any additional paperwork necessary. You will also sign off of the clearance at the end of work or the end of your shift, whichever comes first. If work is not complete you will need to prepare to give details to the next shift at turnover as well as ensure your work package has all circle slashes marked to ensure what step the next shift will start on.



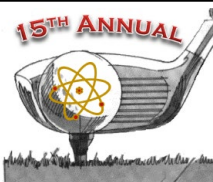
Last Place Champs  
John Lamar, Kip McCabe, &  
Buck McHenry



Championship Flight Tournament Champs  
Jordan Fleming, Jesse Hall, Mike Curry, &  
Chris Pino



Dan Merrick with First Flight  
winners Matt Barletta, Joey Baran,  
Kyle Karmonick, Sam Grohol



## MERRICK GROUP CLASSIC

The Merrick Group along with our generous sponsors, volunteers, and players raised over **\$30,000** to benefit special needs children through Helping Hands Society. Thank you to everyone who participated and helps make this event successful each year, you are making a difference!



**"Well done. Thank you very much Matt, Jim, entire Merrick crew and Bill Basta for a great job on the Merrill Creek Pipe Coating Project! The project and environment may have been difficult, but you found a way to be successful and even with smiles on your faces! I appreciate all your efforts and excellent workmanship."**

# Shout Out



**-Arlene McCoy, Managing Engineer  
Merill Creek Reservoir**





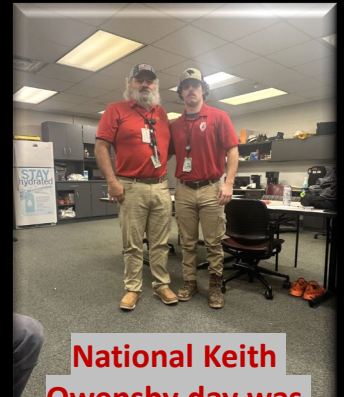
Greg Masich & Jesse Padgett



Lynsey Stump & Glen Hunsinger



Jillian Underwood & Tracy Lowery



National Keith Owensby day was declared at Catawba



Jake Young "Banana"



Vogtle U4



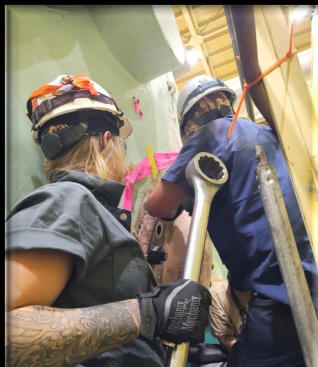
Aloha from the HECO crew – Chris Welch, Josh Sano, Jayden Muellner, Steve Joiner, Jayden Joiner, Rob & Diane Zecker



Karsten Owensby



Vogtle U4



MSR at Catawba



Gary Lagana



The one & only Jared Reber

FALL SEASON  
KICK OFF

HI → GA → NC



Jesse Padgett