



The Dose

The Merrick Group, Inc.

APRIL
2026

Seasonal Reminders...

- ✓ PPE is required at all times
- ✓ Report hazards immediately
- ✓ Maintain a tidy workspace
- ✓ Keep supervisors informed of any issues
- ✓ Ask questions if something is unclear
- ✓ Confirm tasks and expectations
- ✓ Support your coworkers
- ✓ Maintain a positive and professional attitude
- ✓ Check email daily
- ✓ Keep your personal information up to date with corporate office



WHERE ARE WE WORKING THIS MONTH?



McGuire
SSES
Brunner Island
Wolf Creek
Catawba
Watts Bar
Comanche Peak
Oconee
Montour

DID YOU KNOW



Low Carbon, High Impact - Nuclear power plants produce almost zero greenhouse gases while generating massive amounts of electricity. That means they can power cities without heating up the planet, a key ally in the fight against climate change!



Wishing everyone a happy and peaceful Easter!
Thank you for your hard work and dedication, especially to those out on the road this holiday. Your efforts keep everything moving and are truly appreciated. Stay safe and enjoy the day wherever you are.

CLEARANCE & TAGGING

The Clearance & Tagging Program provides safety and protection to people working on equipment that affects plant operations.

Energy Isolation Device

A physical device that prevents the transmission or release of energy

People are protected by properly identifying and controlling ALL sources of hazardous energy supplying the equipment or system.

Clearance

Document that specifies the EIDs that are used to provide protection

What is Hazardous Energy?

Any energy, including mechanical, pneumatic, hydraulic, electrical, chemical, nuclear & thermal energies that could cause injury to an employee.

CLEARANCE & TAGGING CREW BRIEF

The "Holder" conducts a brief to all Authorized Workers who will be covered under the clearance to ensure they understand how and why they are protected as well as the limitations of the protection provided by the clearance.

CLEARANCE HOLDER

The administrative owner of the Clearance. Verifies adequacy, accuracy & effectiveness of the clearance.

SIGNING ON TO THE CLEARANCE

Authorized Workers must attend the clearance brief prior to signing on the clearance. You must understand the adequacy of the clearance protection. It is the AW's responsibility to sign off the clearance at the completion of work or the end of shift, whichever comes first.

AUTHORIZED WORKER

Any person that needs protection under a clearance.

ESOMS IS THE ELECTRONIC CLEARANCE

YOU CANNOT SIGN OTHERS ON/OFF CLEARANCES

No one is permitted to break the plane of any component until they have been briefed and signed on the clearance. That means if you are walking down a component, you cannot cross the barrier with your hand or body until/unless you are signed on the clearance.

Shout Out!

“Keith, Gary, Justin, and the Merrick Group Team,

I want to extend my sincere thanks to each of you for your professionalism and dedication during 1R26 at Plant Vogtle. Your team’s willingness to accommodate our needs—especially when additional work scope was added due to equipment issues—was greatly appreciated. Your responsiveness and commitment ensured that all the additional tasks were completed safely, efficiently, and to the highest standards. It’s always a pleasure working with a team that consistently demonstrates such a strong work ethic and collaborative spirit. Thank you again for your outstanding support and partnership. We look forward to continuing our successful relationship in future outages.”

*-Jeff Feagin
Plant Vogtle*

“I’d like to extend my gratitude towards Nate Rainier and his team. I have successfully completed my eddy current campaign in the waterbox and the quality of tube cleaning was certainly a big portion of that. Furthermore, despite the ongoing challenges and difficulties of working at this outage, Nate and his team maintained a positive attitude and a commitment to providing site engineering a quality product. Please make sure my thanks and gratitude is extended to the entire crew who attended the outage.”

*-Cory Smith
Grand Gulf Nuclear Station*

“I truly appreciate the kind words. The credit belongs to the entire Merrick team for the professionalism, craftsmanship, and safety-first mindset you brought to another outage. As always, this outage came with its share of schedule challenges, but your capability, adaptability, and teamwork made all the difference in helping us stay on track.

Romo, thank you for your leadership and steady guidance throughout the outage. The way you and your supervision kept the team aligned, prepared, and focused on doing the work safely and correctly speaks volumes about Merrick’s culture.

Fish, I’m grateful for the confidence and the partnership we’ve built over the years with your entire organization. Expanding into new areas isn’t always easy, but Merrick stepped into the space without hesitation and delivered. It’s been a privilege to work alongside a group that consistently demonstrates both pride in their work and genuine care for their people and our plant. I look forward to continuing to grow the partnership with Merrick here at VC Summer. Safe travels, and thank you again for a safe, quality, and well-executed outage. I look forward to improving and expanding your experience here at VC Summer. ”

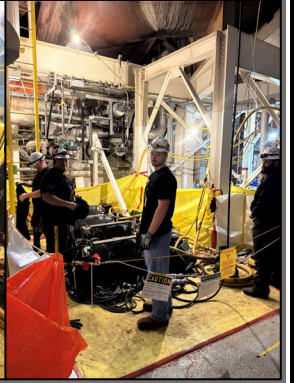
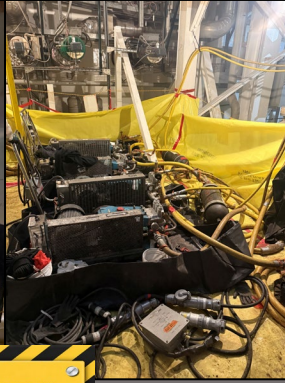


*-Michael Folk
V.C. Summer Nuclear Station*

GRAND GULF HX



Jared Reber, Logan Miller,
& Brandon Reynoso



Brandon Reynoso &
Logan Miller



BRUNSWICK HX & ECT



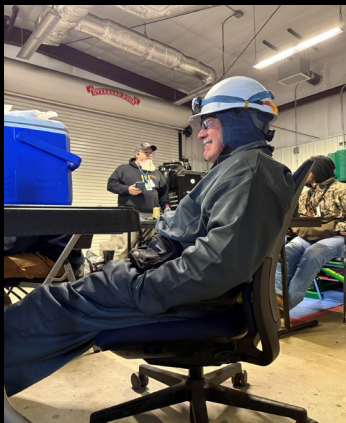
Ashley Burleson
conducts field repairs
on 3D pushers



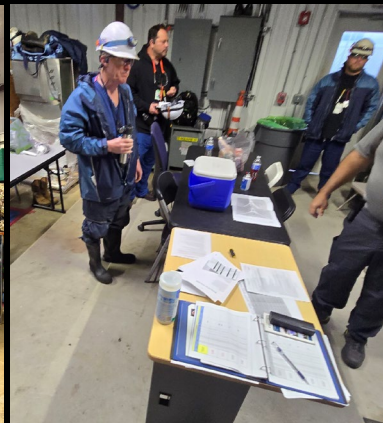
Dale Keen & Jake Young
feedwater plugging



Jake Young



Dale Keen enjoying
breaktime



Dale Keen, Dan Corcoran,
& Jake Young



Lily Markham, Josh Martin, & Elijah Guest
wrapping up the last waterbox